



4F-1, 236, Fu-Te 2nd Rd., His Chih,

Taipei Hsien, 221, Taiwan

TEL: 886-2-6616-6692 · 2694-6687

FAX: 886-2-2694-6875 · 2694-5097

Carriage Changing Process

RX/RX II

Revision History :

Version	Date	Page	CONTENTS
1.0	May 20, 2014		First release
2.0	Sept. 16, 2015		Add RX II

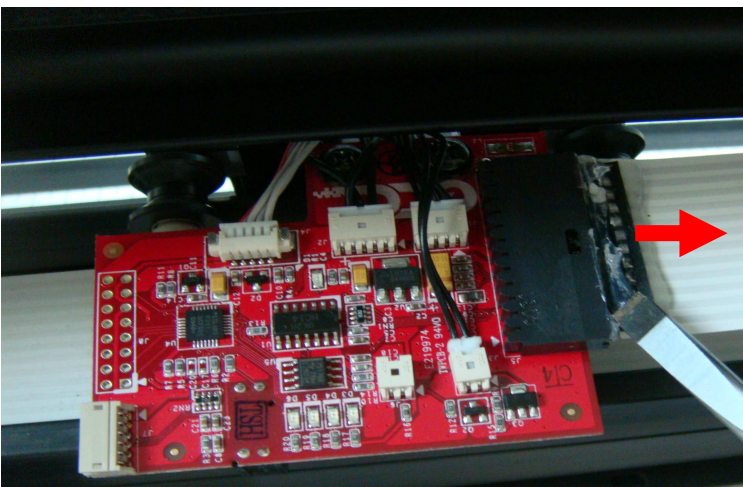
Tools Required:

- Phillips screwdriver
- Slotted screwdriver
- Allen Wrench
- Pencil

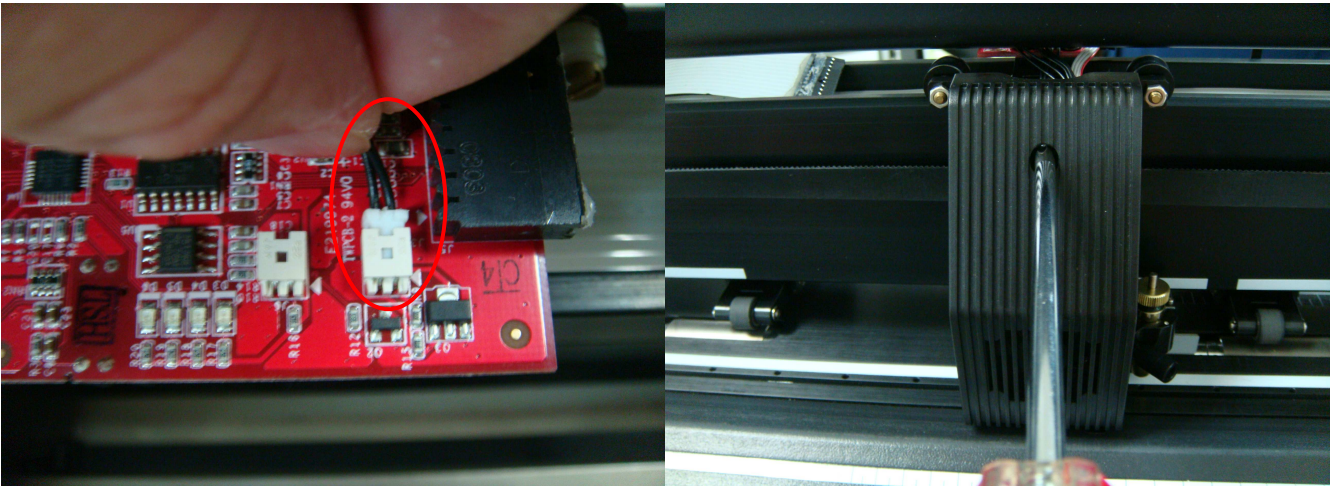
1. Turn off machine and un-plug AC power
2. Lift the top cover.



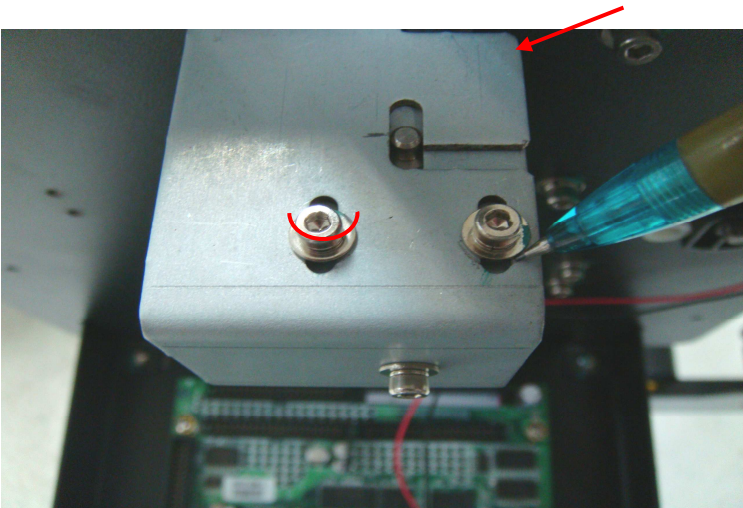
3. Use Slotted screwdriver to scrape off the glue on carriage PCB connector and unplug it.



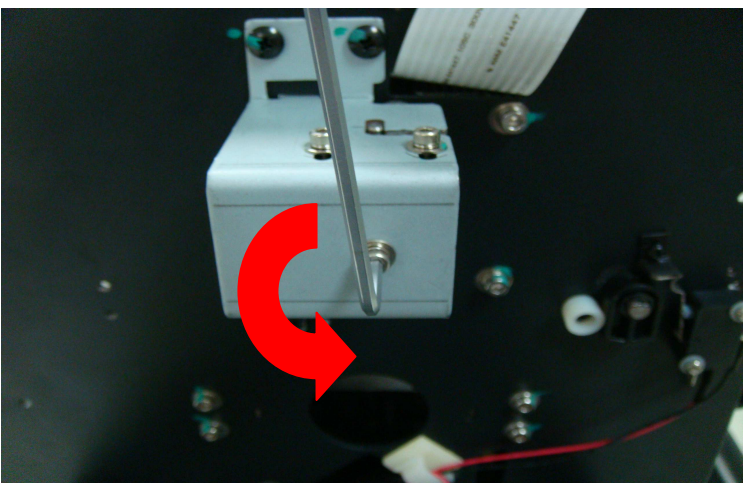
4. Unplug the cable on carriage PCB (J3) and unscrew 2 screws on carriage cover then remove it.



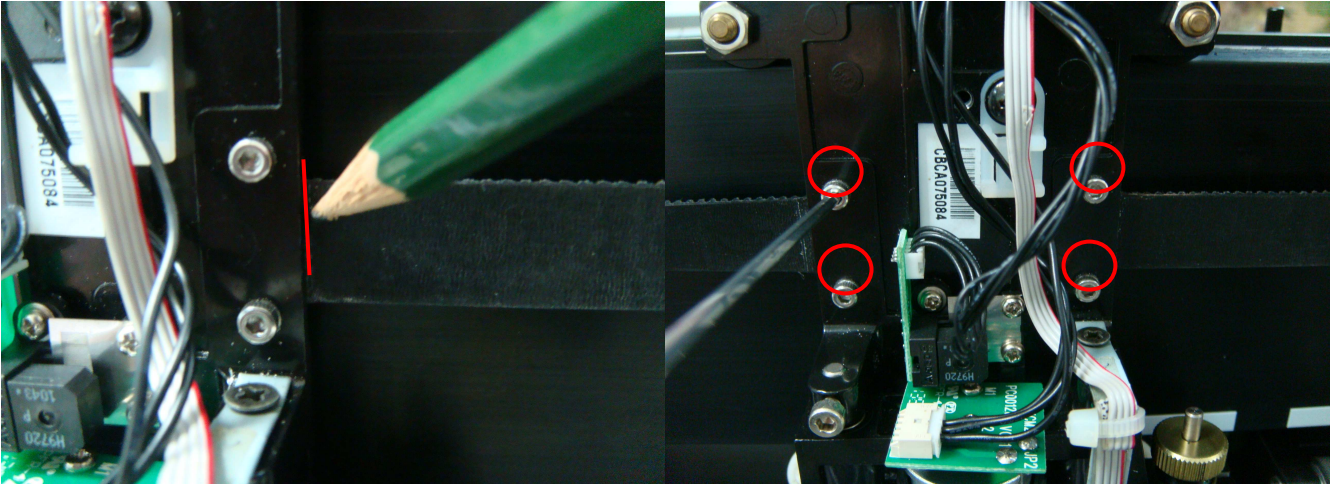
5. Use pencil mark on the Y belt tension **adjustment rack** to know the original position.



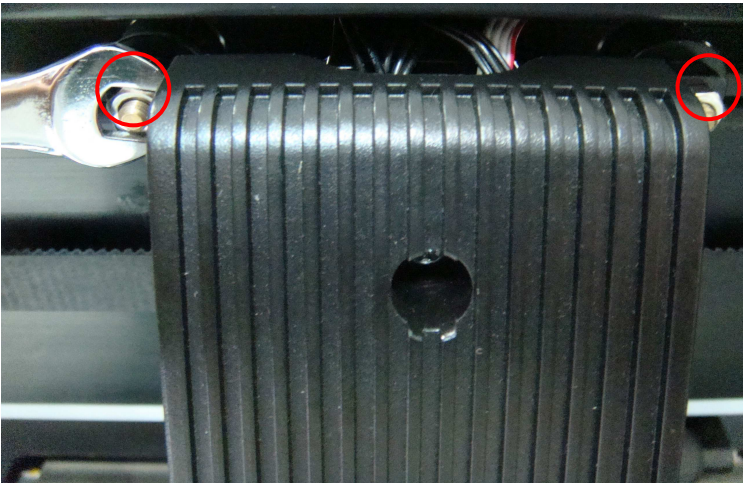
6. Use Allen Wrench to lose the Y belt tension (about 4 complete turns).



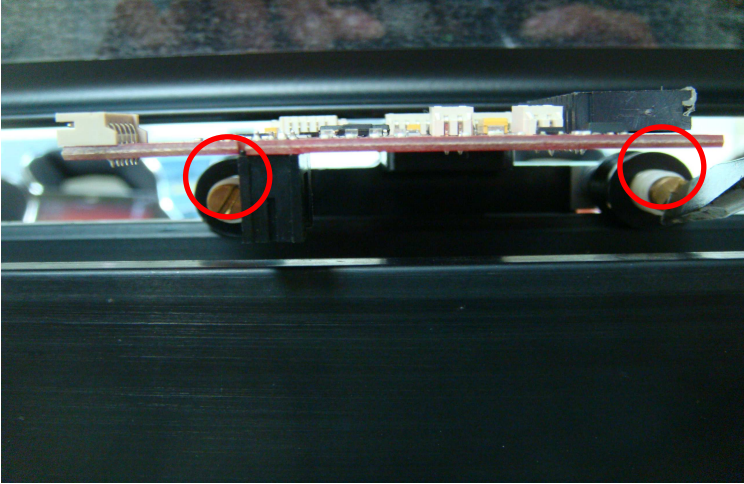
7. Use pencil mark on the Y belt then loose the screw on belt holder and remove the belt pin (NOTE: loose it but not to remove).



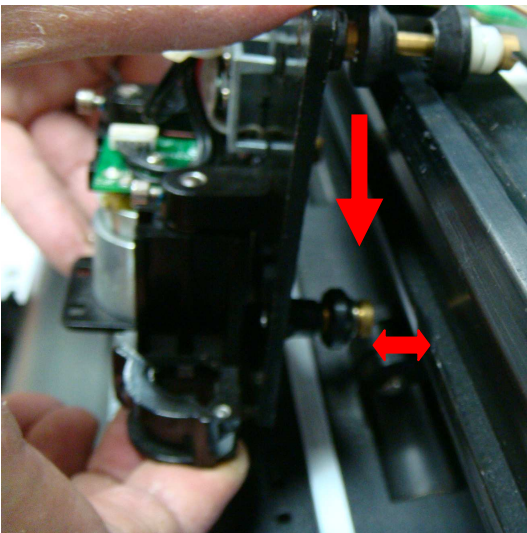
8. Use hex to unscrew 2 nuts on front of the carriage.



9. Use Slotted screwdriver to loose two screws on top of carriage from the back. (NOTE: loose it but not to remove).



10. Push the carriage down and pull out the carriage from the bottom.



11. Replace the carriage.

