



4F-1, 236, Fu-Te 2nd Rd., His Chih,

Taipei Hsien, 221, Taiwan

TEL:886-2-6616-6692 · 2694-6687

FAX:886-2-2694-6875 · 2694-5097

Touch key and LCM Changing Process

RX/RX II

Revision History :

Version	Date	Page	CONTENTS
1.0	May 24, 2014		First release
2.0	Sept. 16, 2015		Add RX II

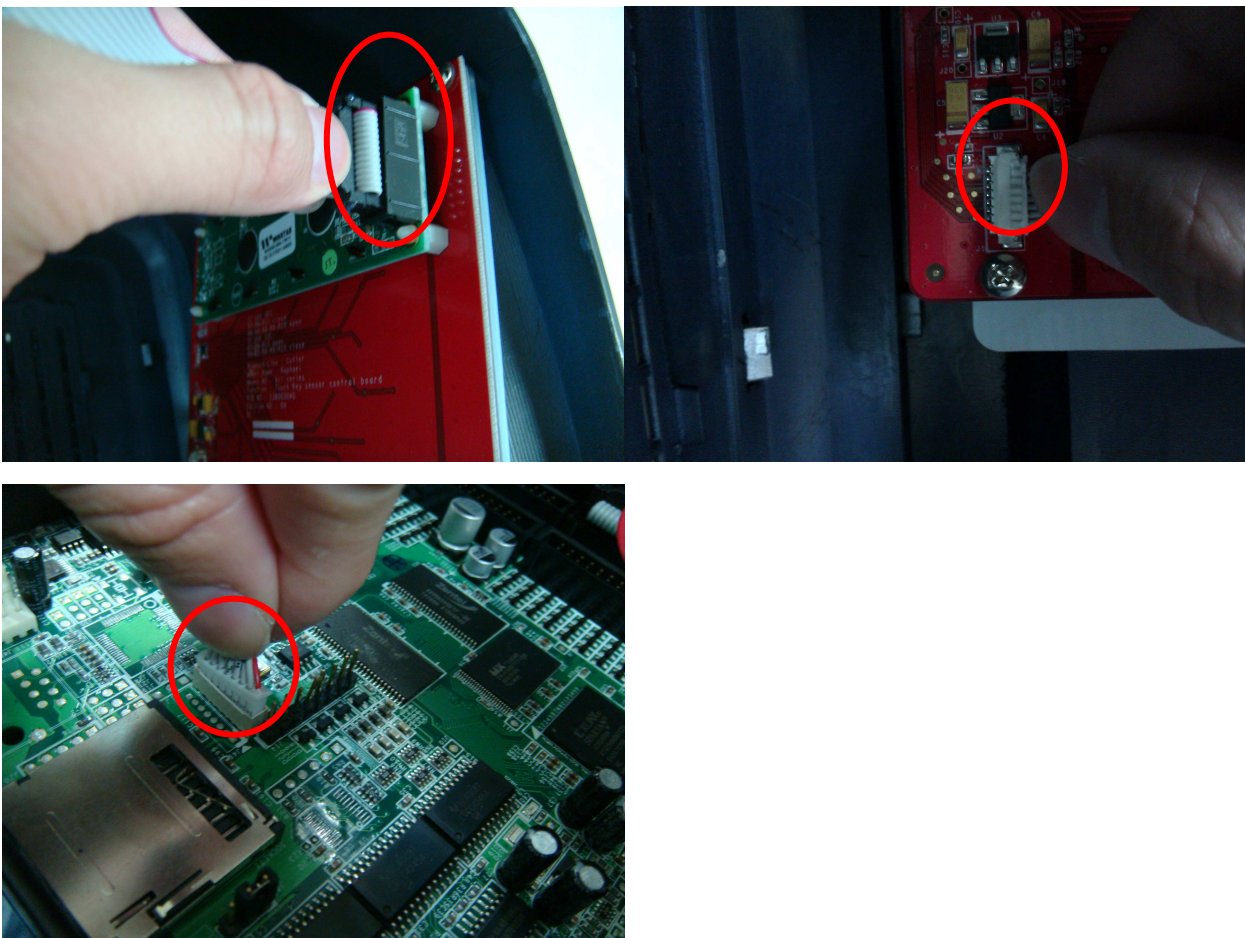
Tools Required:

- Phillips screwdriver

1. Turn off machine and un-plug AC cable.
2. Remove the right side cover by loose 3 screws at front and back.



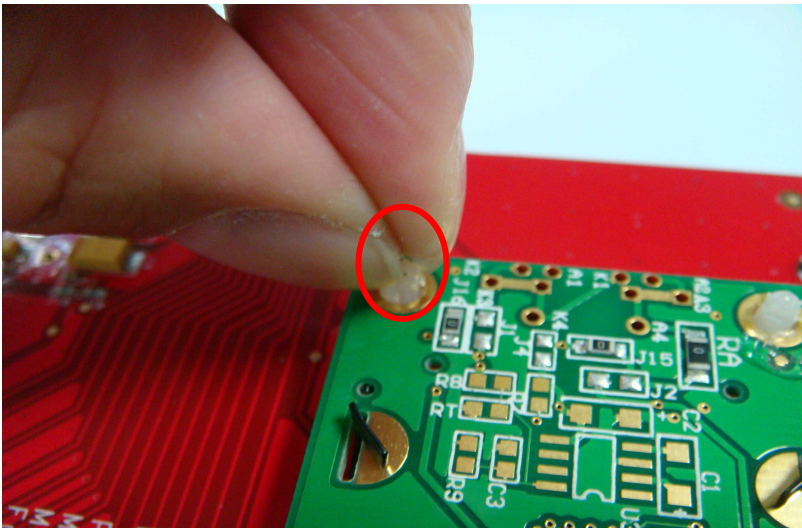
3. Disconnect the cable on control panel at the back side of side cover, and on main board.



4. Remove 4 screws.



5. Withdraw Spacer Support from LCD Module.



6. Remove the Touch Key or LCM from the side cover.

