

4F-1, 236, Fu-Te 2<sup>nd</sup> Rd., His Chih,  
Taipei Hsien, 221, Taiwan  
TEL:886-2-6616-6692 · 2694-6687  
FAX:886-2-2694-6875 · 2694-5097

# Expert 24 LX control panel changing process

Version: 1.0  
May 20, 2014

Revision History :

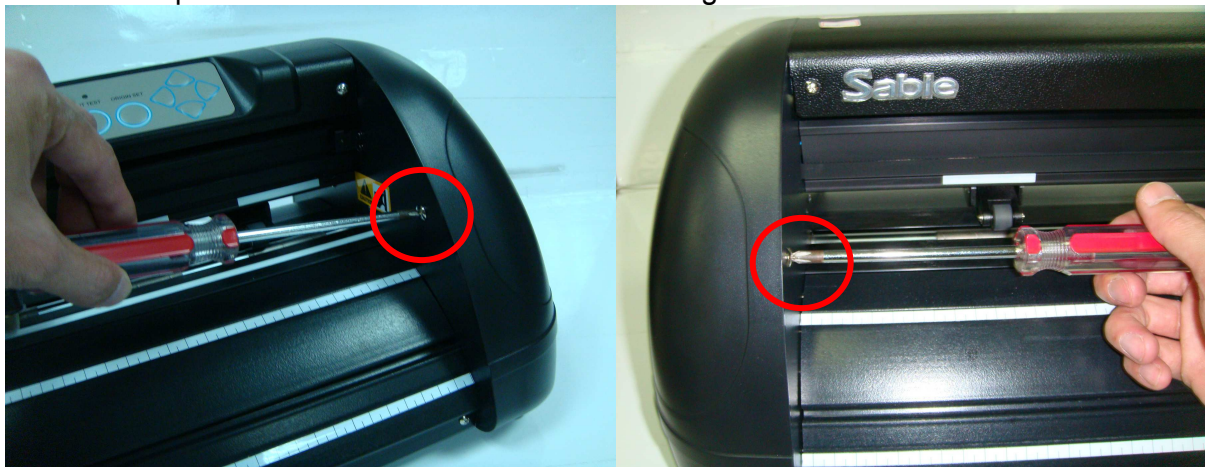
Version	Date	Page	CONTENTS
1.0	May, 20 2014		First release

## How to replace Control Panel

Tools Required:

- Phillips screwdriver
- Slotted screwdriver
- Allen Wrench

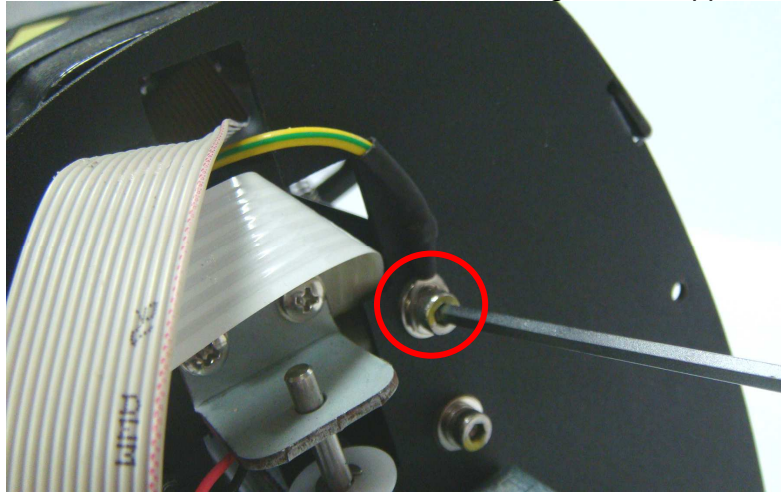
1. Use Phillips screwdriver to loose two screws on right cover.



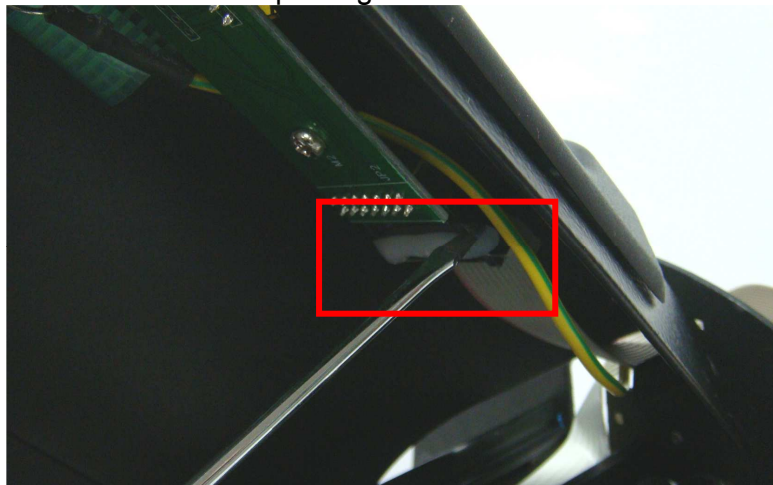
2. Use Phillips screwdriver to loose four screws on top cover.



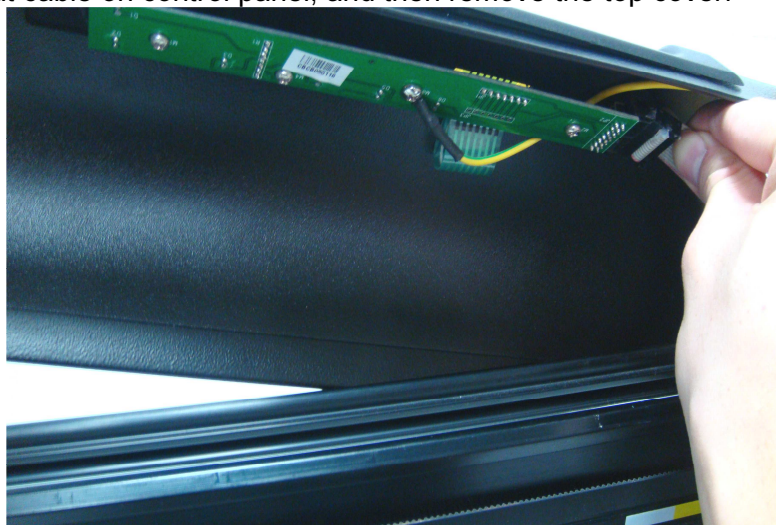
3. Use Allen Wrench to loose Ground cable screw on right side support.



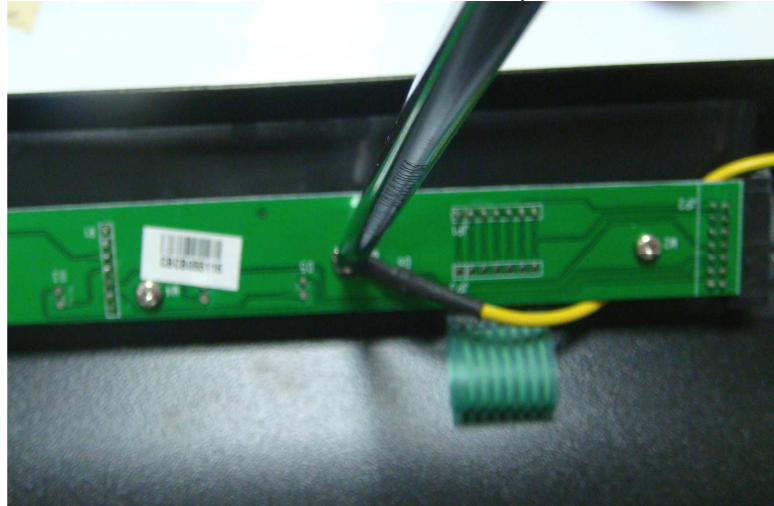
4. Use Slotted screwdriver to scrape off glue on flat cable connector.



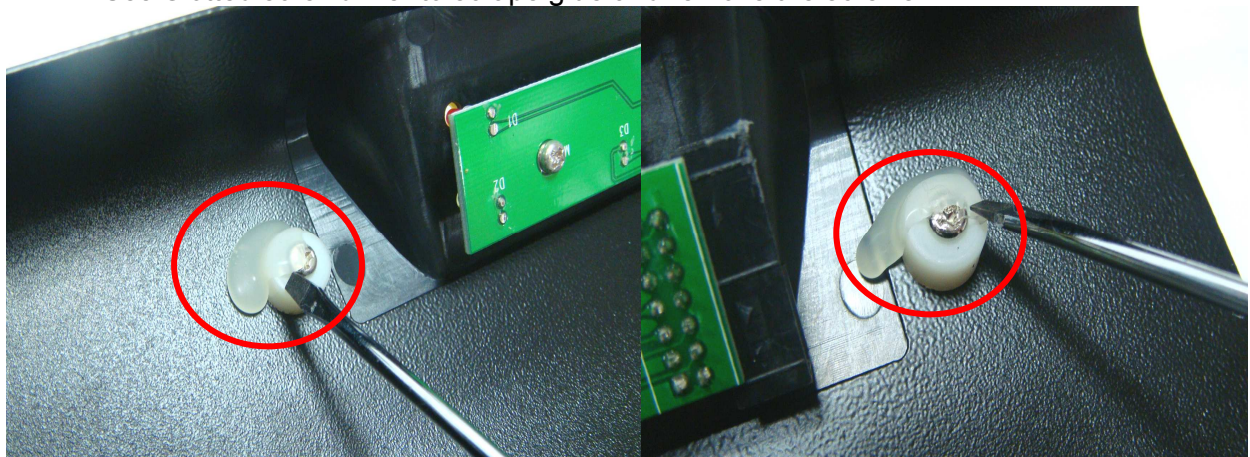
5. Pull out flat cable on control panel, and then remove the top cover.



6. Use Phillips screwdriver to loose screw on control panel board.



7. Use Slotted screwdriver to scrape glue and remove the screws.



8. Change control panel.

